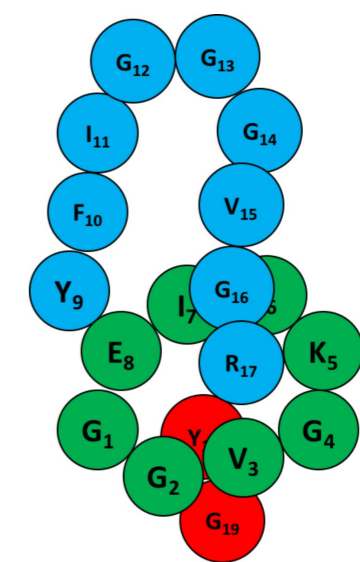




Antimicrobial peptide



ALMAT, More Health

Storage and conservation

Store in a cool, dry place out of direct sunlight. Keep bag closed when not in use.

Packaging

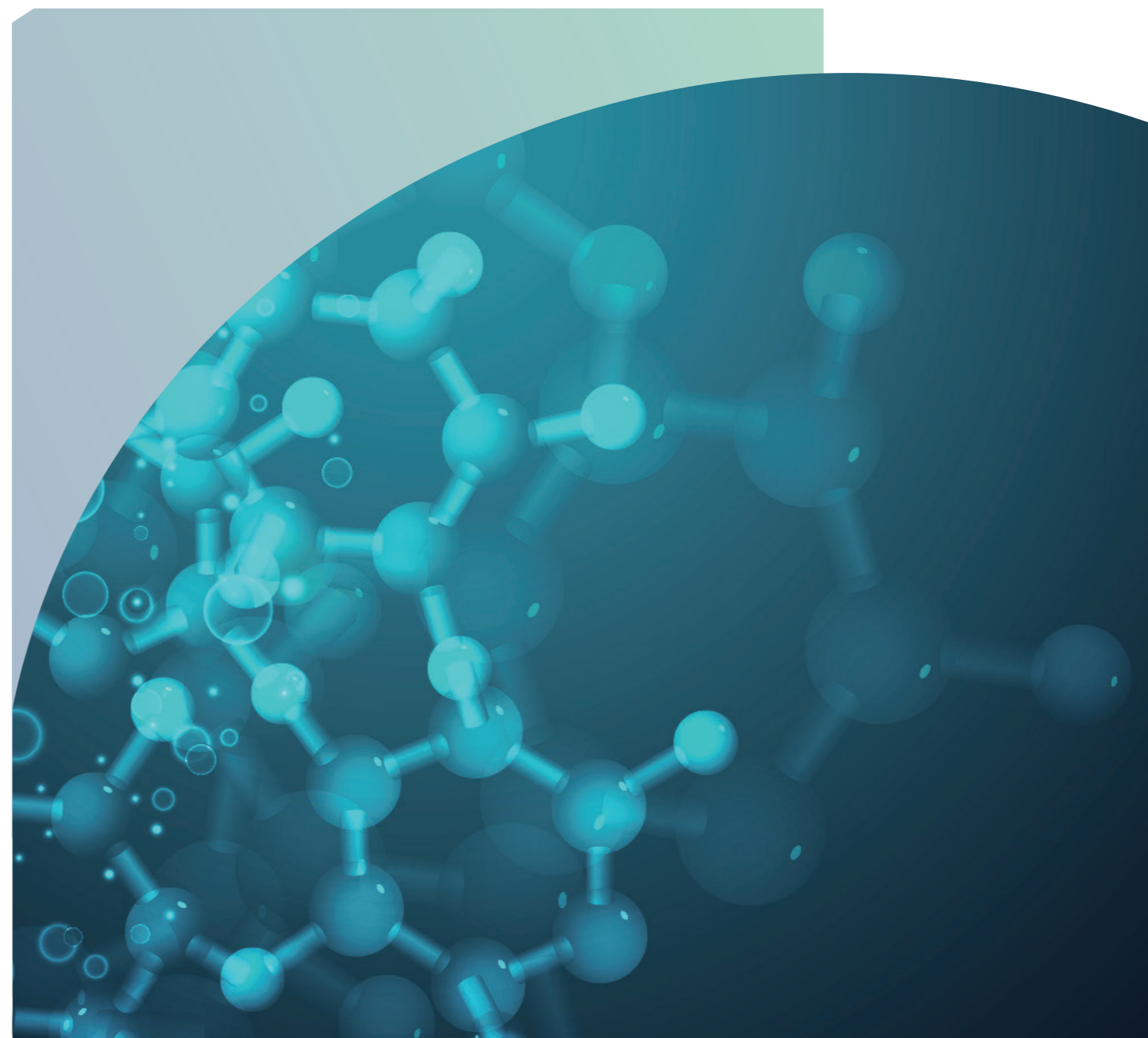
20 kg / bag and 1 kg / aluminum bag.

Shelf Life

24 months

DISTRIBUTOR: Animal Nutrition Development Group, S.L.

www.andnutrition.com, swine@andnutrition.com



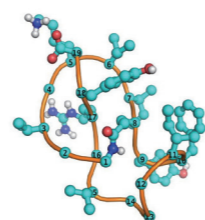


Description

- ALMAT is an antimicrobial peptide designed to fight against a range of Gram-negative enterobacteria.

Features

- The primary active ingredient in ALMAT is Citrocin.
- Citrocin is 19-amino-acid-long antimicrobial lasso peptide produced using a patented yeast fermentation process.
- The lasso structure can confer high thermal stability and resistance against proteolytic degradation.
- ALMAT has strong activity against Salmonella and E. coli



Structure of Citrocin

Product Specifications

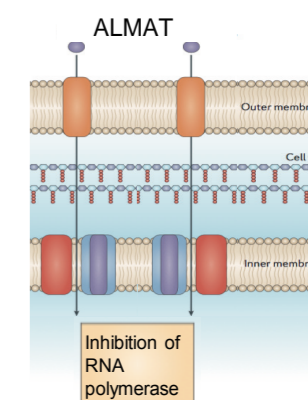
Guaranteed Analysis	ALMAT CONCENTRATED	ALMAT 20% PREMIX	ALMAT 20% SOLUBLE
Citrocin	≥12000 mg/kg	≥2400 mg/kg	≥2400 mg/kg
Crude Protein	≥3%	≥2%	≥2%
MOS	≥0.5%	≥0.1%	≥0.1%
Crude ash	≤11%	70%	≤11%
Moisture	≤10%	≤10%	≤10%

Benefits

- Alternative to antibiotics in swine, poultry and pre-ruminants
- Improve animal performance
- Enhance host protective immunity

Mode of action

ALMAT transports through the outer and inner membranes of Gram-negative bacteria, and then bounds to their natural enzymatic target, the bacterial RNA polymerase to inhibit DNA transcription.



Minimum Inhibitory Concentration (MIC)

Strains	MIC(µg/mL)
Gram-negative bacteria	
E.coli ATCC25922	0.125
E.coli CVCC1515	0.25
E.coli CVCC1522	0.03
E.coli AZ1	0.23
Salmonella pullorum CVCC1791	0.03
Shigella flexneri CMCC51571	0.125

RECOMMENDED DOSAGE

Animals	ALMAT CONCENTRATED		ALMAT 20% PREMIX	ALMAT 20% SOLUBLE
	g / 1000L water	g / ton in the feed	g / ton in the feed	g / 1000L water
Nursery pigs	35-66	100-200	500-1000	175-330
Sows	35-50	100-150	500-750	175-250
Growing pigs	20-35	50-100	250-500	100-175
Broilers & Turkeys	25-50	50-100	250-500	125-250
Layers	25-50	50-100	250-500	125-250
Pre-ruminant	1-4 g/h/d	50-100	250-500	5-20 g/h/d